

INSTALLATION GUIDE OF ETHYLENE ABSORPTION FILTERS OZEANO IN COLD ROOMS

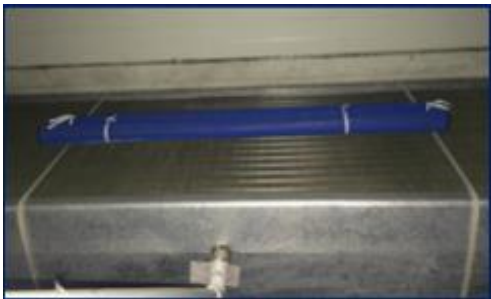
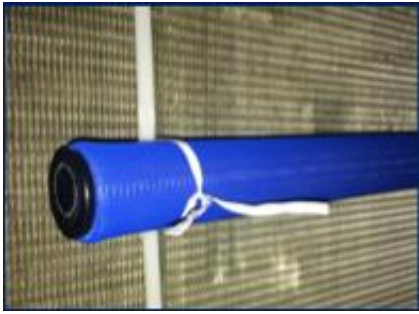
- ✓ The best place to install the filters is in the air intake of cold equipment.
- ✓ Water contact must be avoided.

IMPORTANT: Cold equipment must be turned off while filters are installed with flanges in the grid of the cold equipment and must be turned on after their installation.



The necessary straps are attached so that they embrace the diffuser, cutting leftovers and leaving the unions in the middle part of the return located at the back of the diffuser.

Note that the straps are attached once so you only change the filters.



The filter is placed with the wires attached to the union of the strap.
If it's needed to install a second filter, it will be attached with the wires to the other filter already install.